



# MSPs – Build Your Intellectual Property with AI

A network diagram consisting of five circular nodes connected by lines. Each node contains a different icon: a magnifying glass over a brain, a hand holding a gear, a brain with circuitry, a cloud with a gear, and a brain with a gear. The background features a blue and purple gradient with a grid of dots and a large white circle on the right.

5 Things MSPs  
Need to Know  
About Creating  
a Successful  
Data Lake  
Strategy

# Introduction

In today's rapidly evolving digital landscape, data has emerged as the new currency, reshaping industries and fueling business success. This is particularly evident in the MSP industry, as more companies are merging, collecting vast amounts of data at an unprecedented rate.

Yet the real value of this data lies in its strategic utilization and analysis. This is where the concept of a data lake comes into play – a central repository that allows MSPs to securely store, manage, and leverage their intellectual property (IP), providing an invaluable resource that ultimately unlocks their data's true potential.



# WHY DATA LAKES ARE IMPORTANT

Intellectual property encompasses a company's proprietary knowledge, innovations, and unique processes that give it a competitive edge. This could include anything from knowledge base articles, unique processes, how-to documents, and previous solutions.

Data lakes are designed to accommodate raw data of any format. This makes them highly scalable and flexible, as they can handle data from diverse sources such as line of business applications, databases, and more.

This unification of data and the connections it enables makes it smarter. The key to the data lake's power lies in its ability to serve as a hub for all data assets, regardless of where they are stored or created. A data lake acts as a fertile ground for nurturing and leveraging this intellectual property to drive innovation and business growth. This is the most important asset you can have for IT support.

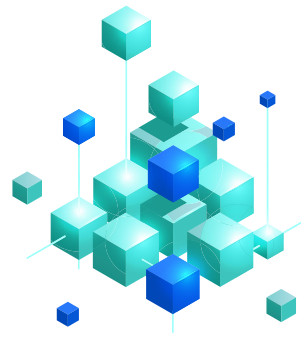
Once you can see what a tech has resolved prior, find information fast, and identify when data does not exist, only then can you truly own your intellectual property. It is unsustainable for IT support companies to continue to hire more people to maintain SLA/SLO when salaries are increasing, techs are in short supply, and turnover is high.





### **Analysis from data lakes**

Data lakes enable MSPs to combine diverse data sets to gain comprehensive insights. By cross-referencing IP-related data, companies can uncover hidden patterns, correlations, and opportunities that might have otherwise remained obscured.



### **Agile Decision Making**

When it comes to rapidly changing technology, software, and solutions, quick decision-making is crucial. Data lakes provide a real-time view of various aspects of a business, including intellectual property, enabling agile and data-informed decisions that can help a company stay ahead of the competition and keep clients happy. Think of how much it costs to replace revenue. If you are a top-tier MSP, your company will still lose 12% of your existing clients per year.



### **Informed Innovation**

Data driven innovation is the cornerstone of business success. MSPs can utilize their data lakes to analyze trends, customer behavior, and technology shifts. This information can guide the development of new processes and services that align with customer needs and preferences, making innovation more targeted and effective. MSPs can create personalized customer experiences and enhanced customer support.



### **Mergers and Acquisitions**

A well-maintained data lake can serve as the foundation for expanding the IT support desk across states, time zones, and even internationally. Giving IT support teams access to a data lake across multiple systems positions them to maintain client intimacy and make the transition as transparent as possible.

# CREATING A SUCCESSFUL DATA LAKE STRATEGY

To truly harness the power of a data lake and leverage intellectual property, MSPs must adopt a thoughtful and strategic approach.

## 1 DATA GOVERNANCE - ENSURING DATA QUALITY AND COMPLIANCE

Most companies' data ranges from very poor to good, and you'll be hard pressed to find someone who will claim their data is outstanding. For a majority of MSPs, their data is either unsearchable, nonexistent, not properly input, or is not correlatable. This is because neither IT support techs nor managers make a high priority out of creating a pristine data lake, which is paramount to running a stable, repeatable process. Consistency and quick delivery, which are keys to client longevity, are impossible to deliver without great data.

This is where Data Governance comes in. This involves establishing clear guidelines for data quality, security, and compliance. Your data is only as valuable as it is accurate, trustworthy, and compliant with regulations. By setting stringent standards for data integrity, you create a foundation upon which your data lake can flourish. When your data complies with regulations and adheres to quality benchmarks, it becomes your company's most powerful asset.



## 2 DATA INTEGRATION - CREATING A UNIFIED VIEW

Data Integration is the linchpin of a successful data lake strategy. By integrating data from various sources, including intellectual property assets, you are able to construct a unified view.

This process may require data transformation and cleansing to ensure compatibility. With a cohesive data landscape, you gain the power to extract insights that were previously buried in disparate databases. Your IT support team gains a holistic perspective, enabling them to serve clients with precision and efficiency.



## 3 ADVANCED ANALYTICS - UNLEASHING THE POWER OF INSIGHTS

Investing in cutting-edge analytics tools and technologies enables sophisticated data processing, analysis, and visualization. These capabilities empower your MSP to extract invaluable insights from your data lake. Advanced Analytics propels your data lake strategy to new heights, revealing patterns, correlations, and opportunities that can truly transform your IT support services. With data-driven decision-making, you can stay ahead of the competition and deliver consistency and speed to resolutions that exceed client expectations.



## 4 SCALABILITY - ADAPTING TO GROWING DEMANDS

It's important to design your data lake with scalability in mind. As data volumes grow, your infrastructure must seamlessly accommodate the increasing demand for storage and processing power. A well-designed data lake can effortlessly scale to match your evolving needs, allowing your IT support team to handle growing workloads with ease. Scalability future-proofs your data lake, ensuring it remains a valuable asset for years to come.



## 5 TALENT AND TRAINING - NURTURING DATA EXPERTS

Finally, it's vital to ensure that your team possesses the necessary skills to effectively manage and analyze your data lake. In a rapidly-evolving technological landscape, continuous training and upskilling are essential. By nurturing adaptable data experts within your organization, you ensure that your data lake is utilized to its fullest potential.

## CONCLUSION

Data lakes offer a pivotal shift in how we approach IT support when leveraged properly. By creating a centralized repository for all customer support data assets, MSPs can unlock insights and drive innovation. A data lake can serve as an invaluable resource for MSPs, creating a cornerstone for data management, intellectual property utilization, and data-driven decision-making.

In the digital age, a well-constructed data lake can be the key to staying competitive and relevant in the IT support marketplace.

CrushBank's AI Knowledge Management platform empowers MSPs to leverage the power of data lakes. CrushBank ingests data across your organization into a single, secure data lake in the cloud, then leverages its powerful AI engine to continuously optimize and update that data, transforming it into actionable, operational knowledge that powers your business growth.

**CrushBank** is an award-winning and industry-leading AI Knowledge Management platform that transforms IT support, enabling faster resolutions, fewer escalations, and unparalleled analytics. CrushBank unlocks previously unsearchable content to provide invaluable support information and helps categorize client interactions for improved decision-making.

Contact us today to

[LEARN MORE](#)

Trustworthy AI from IBM

**watson**x™

 **CRUSH**BANK